



FB150-V

ONfinity FB150-V is a fully featured portable wireless interactive whiteboard system that enables interactive teaching from anywhere in the classroom. The superior wireless connectivity and easy portability makes it the ideal plug and play solution for interactive presentations and engagement.

The ultra-thin and lightweight body enables easy transportation whilst the non-slip material and attached clip for sheets of paper up to A4 epitomises comfort and utility. Ergonomically designed for both left and right-handed users, the FB150-V also contains an on-board matrix LCD status display, which enables convenient monitoring of the system status.

The built-in voting system of the FB150-V enables a truly interactive class or meeting experience. With one dongle capable of linking a maximum of 48 whiteboards, Onfinity delivers a cutting-edge method of unified activity and engagement. One dongle is also capable of supporting 48 voting systems, which alongside its real-time browse function to monitor the progress of the students, is an invaluable tool for keeping up to date with the students' work, as well as providing interactive engagement en masse.

With its cutting-edge design and wireless ability, the FB150-V is the most effective and innovative presentation tool designed for the next generation and garnering a new freedom and breath of life into the world of presentations.



How does it work ?



2 IN 1 Dongle



FB150-V E-pen



FB150-V



Computer



1 Plug in dongle



2 Run FB150-V software



3 Switch on FB150-V



4 Accept the wireless link request



5 Wireless control the PC using the E-pen on the FB150-V



Bundled free software



All our FB150-V bundles include unlimited licenses for our FB150-V software as well as one license for two computers, enabling access to the leading WizTeach software. The two softwares combined deliver a wide range of tools, including drawing and video recording, for an engaging and interactive class.

A highly established education software brand, WizTeach is already being used in over 100,000 classrooms across the world and available in 36 languages. With over 70 individual tools for learning, WizTeach offers a huge resource of dynamic and engaging activities whilst enabling ease and convenience with their easy-to-use programme, with the ability to use as many tools as needed at any one time, combination of online and offline content, a 3,400 strong media bank as well as a WizTeach share site to give and receive ideas and content from fellow users.



Operation System

Operation System:

The FB150-V and WizTeach software are suitable for Windows, Mac and Linux operating systems.



Features Highlights:

- 3 Ball pen refill or plastic pen refill for your choose



Using ball pen refill write on normal paper to keep the hard copy.



Using plastic pen refill write direct on the board.

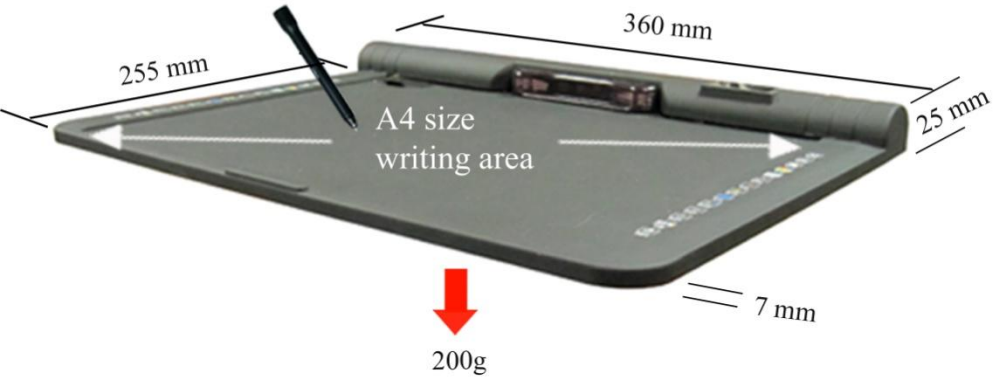
- 4 Magic sheet for environmental friendly usage. Drawing faster and easier. Save paper, save ink.



With the plastic penfill, write on FB150-V Magic Sheet which can lift up to clear drawing and reuse.

Features Highlights:

- 1 Portable and lightweight, A4 size writing area



- 2 2.4 GHz RF smooth wireless connection



Features Highlights:

6 Onboard operation icons

Instant access to on-screen shortcuts by touching with the E-pen. Support left hand and right hand users..



7 On-board matrix LCD display

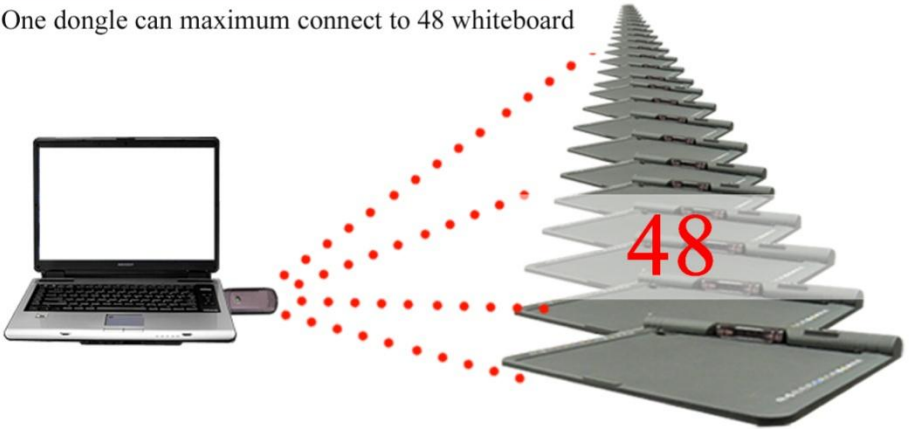
On-board matrix LCD display enables the user to monitor the system status at any time easily



Features Highlights:

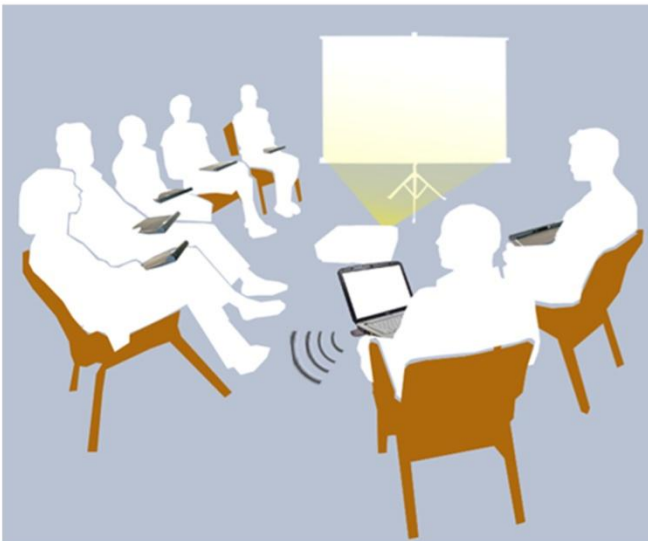
8 Maximum 48 connection boards

One dongle can maximum connect to 48 whiteboard



9 Support multi- user meeting mode

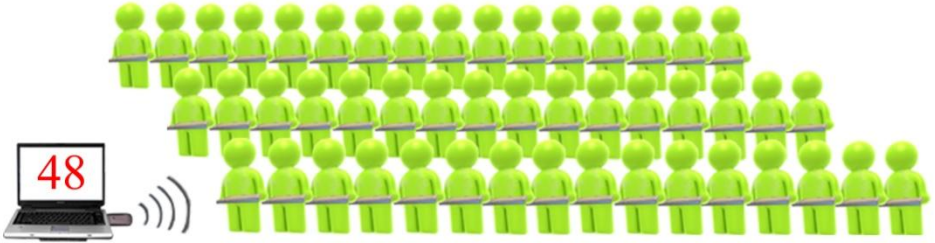
Configure a whole class interactive solution or group meeting. Control right is switched freely.



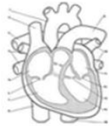
Features Highlights:

10 Build in voting system

One dongle max support 48 voting system



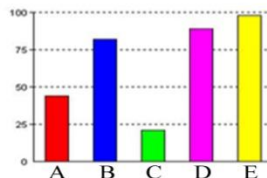
Preset questions, multiple choice and / or subjective questions.



Real time browse function to monitor the progress of any students in real time.

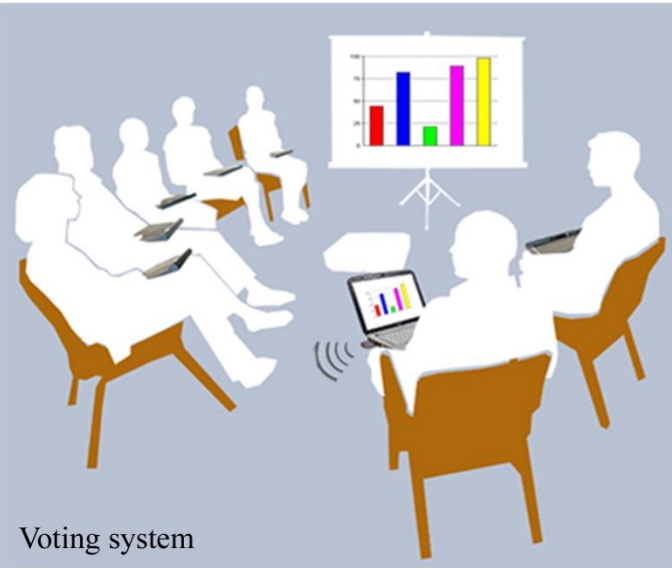


Immediate statistics for answers.

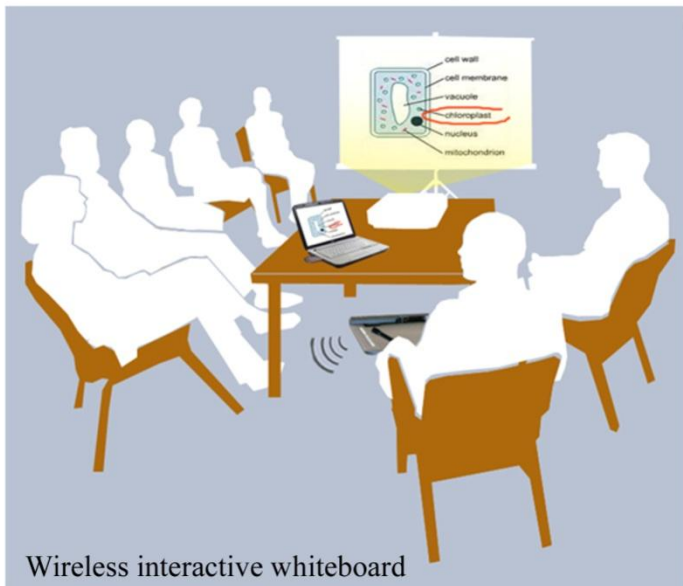




ONfinity FB150-V, a fully featured portable wireless interactive whiteboard voting system that enables interactive teaching from anywhere in the classroom.



Voting system



Wireless interactive whiteboard